

Musical ABC's

Name: _____

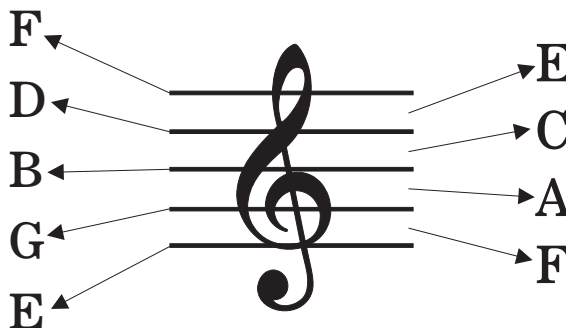
Date: _____

The musical alphabet is like the English alphabet with amnesia. It never seems to get past the letter G. Just like letters are read from left to right, notes are labeled from the bottom up. The lines and spaces of the treble and bass clef are different. So, when looking at note and trying to determine it's name, we must first look at the clef.

Treble clef

Lines

To remember the lines of the treble clef you can remember this little saying.
Every Good Boy
Deserves Fudge.
Remember always
bottom to top.



Remember, the treble clef is the G clef because it wraps around the G line.

Spaces

To remember the spaces of the treble clef, you can remember that they spell the word face

Bass clef

Lines

To remember the lines of the bass clef you can remember this little saying.
Gread Big Ducks
Fly Away.
Remember always
bottom to top.



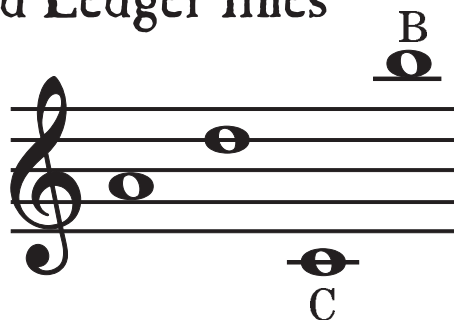
Remember, the bass clef is the F clef because the dots bracket the F line.

Spaces

To remember the spaces of the bass clef, you can remember this little saying. All Cows
Eat Grass

Note Placement and Ledger lines

Place notes in the middle of the line extending half way through the space on either side. Notes on the space should just touch top and bottom lines.



Notes that are above or below the staff continue along with the musical abc's such as the C below the staff and the B above the staff as shown.

Practice

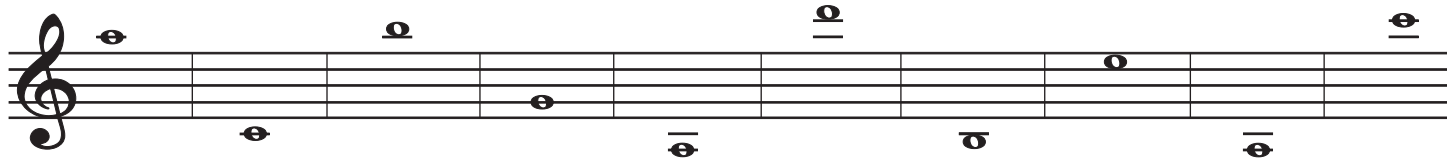
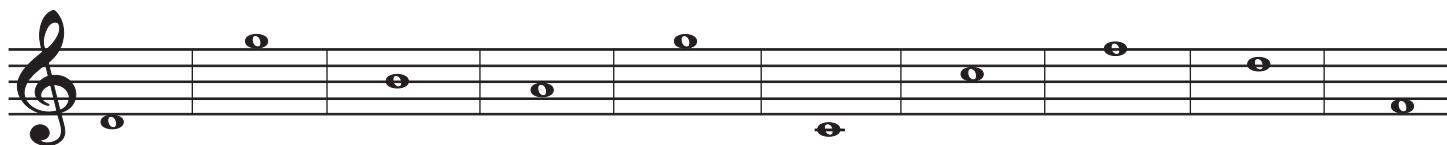
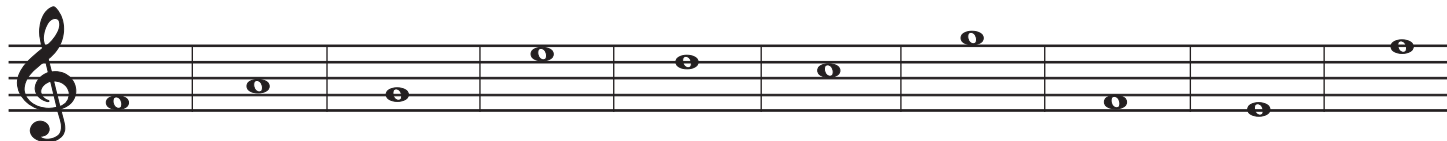
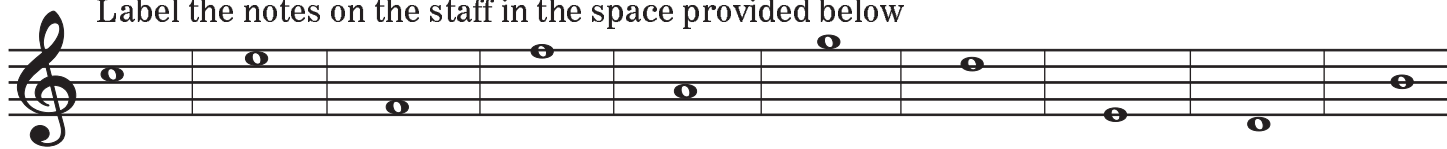
Complete practice sheets 1 and 2 labeling each of the notes. Have a partner check your work after you have finished.

Musical ABC's Practice - Treble

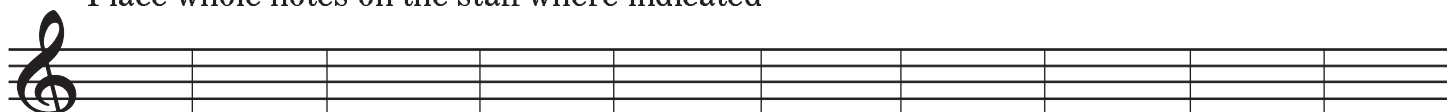
Name: _____

Date: _____

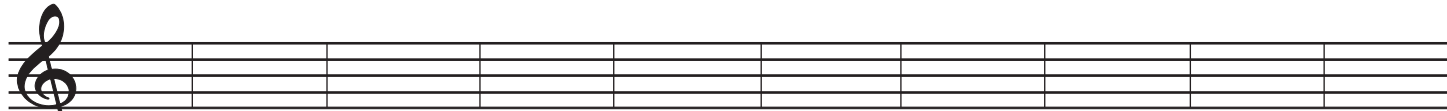
Label the notes on the staff in the space provided below



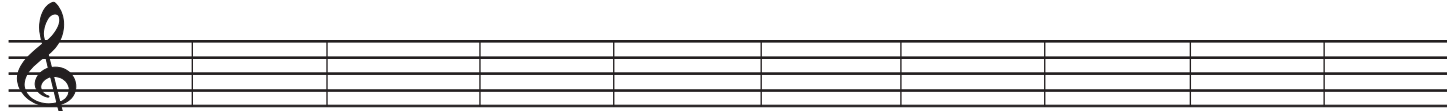
Place whole notes on the staff where indicated



D A B G F E C G E B

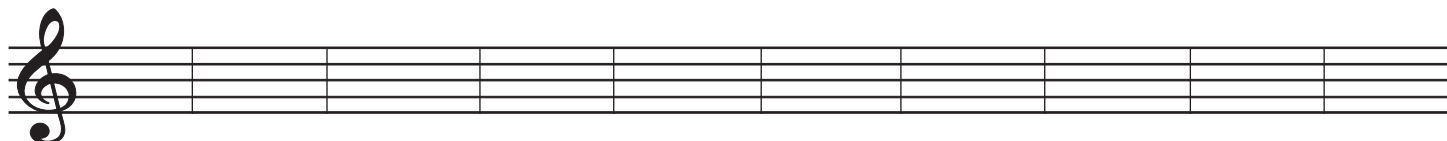


E G B F A C E D A G



G A D E C A F B G E

Use leger lines to fill in these.



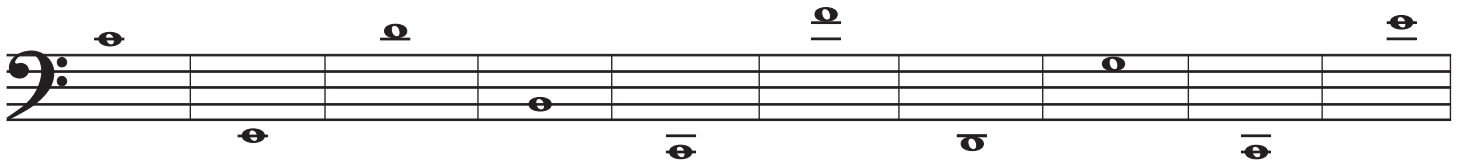
C A B E F D C E G A

Musical ABC's Practice - Bass

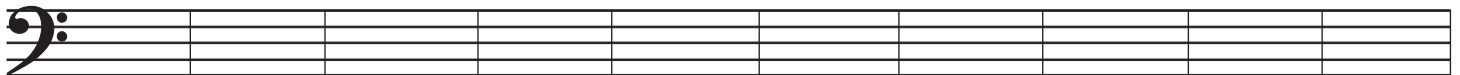
Name: _____

Date: _____

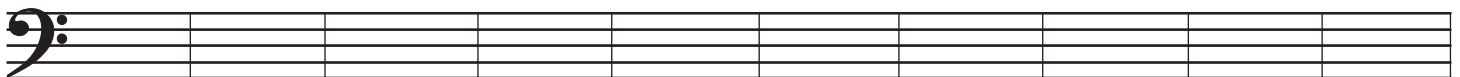
Label the notes on the staff in the space provided below



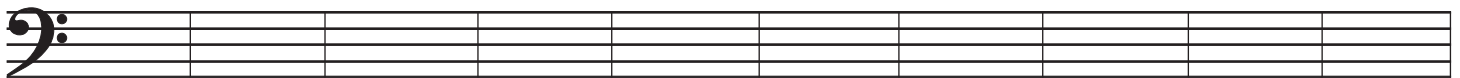
Place whole notes on the staff where indicated



D A B G F E C G E B

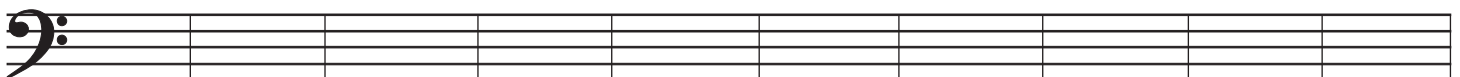


E G B F A C E D A G



G A D E C A F B G E

Use leger lines to fill in these.



C A B E F D C E G A